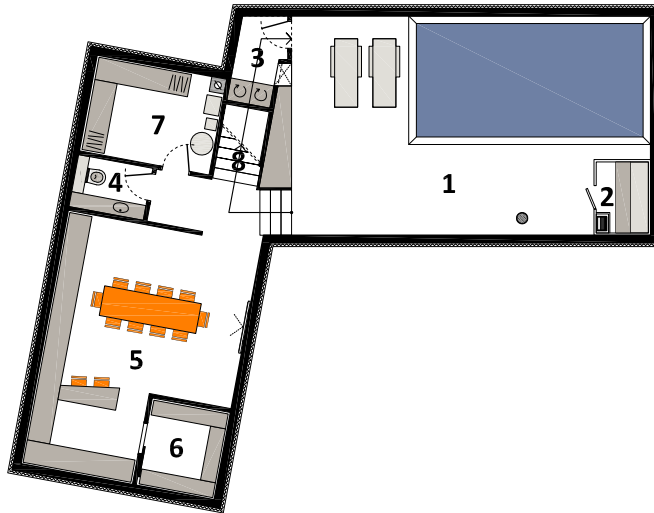


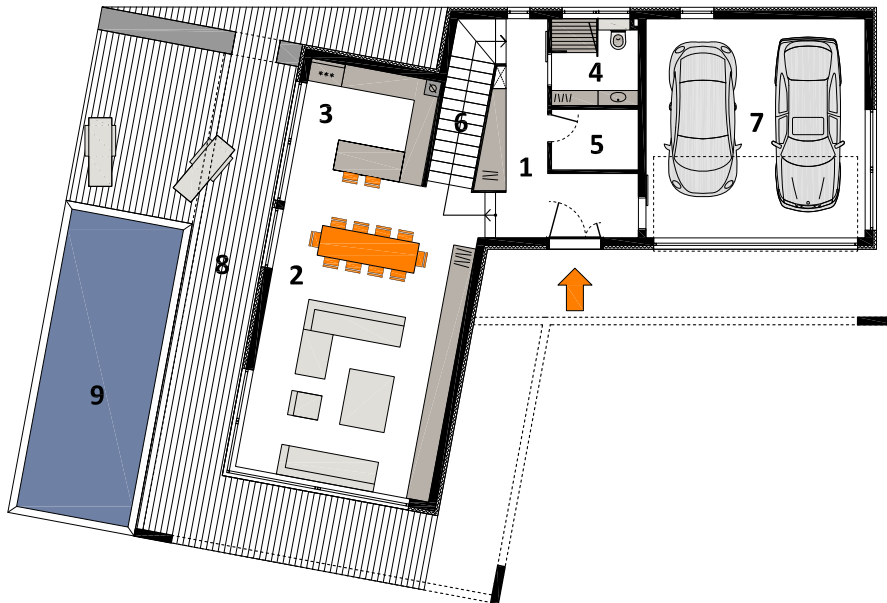


BASEMENT



BASEMENT	brutto (m ²)	koef.	NKP (m ²)
1 spa	53.70	1.00	53.70
2 sauna	2.60	1.00	2.60
3 laundry	2.90	1.00	2.90
4 toilet	2.80	1.00	2.80
5 tavern	35.40	1.00	35.40
6 winery	4.90	1.00	4.90
7 storage/bolier	9.00	1.00	9.00
8 staircase (visina < 1m)	1.70	0.00	0.00
staircase (visina 1-2m)	1.60	0.75	1.20
BASEMENT TOTAL	114.60		112.50

GROUND FLOOR



GROUND FLOOR	brutto (m ²)	koef.	NKP (m ²)
1 wardrobe/corridor	12.40	1.00	12.40
2 dining/living	42.90	1.00	42.90
3 kitchen	10.10	1.00	10.10
4 bathroom	5.30	1.00	5.30
5 storage	3.70	1.00	3.70
6 staircase	5.60	1.00	5.60
7 garage	33.60	0.75	25.20
8 uncovered terrace	61.50	0.25	15.38
9 pool	24.00	0.25	6.00
GROUND FLOOR TOTAL	199.10		126.58

