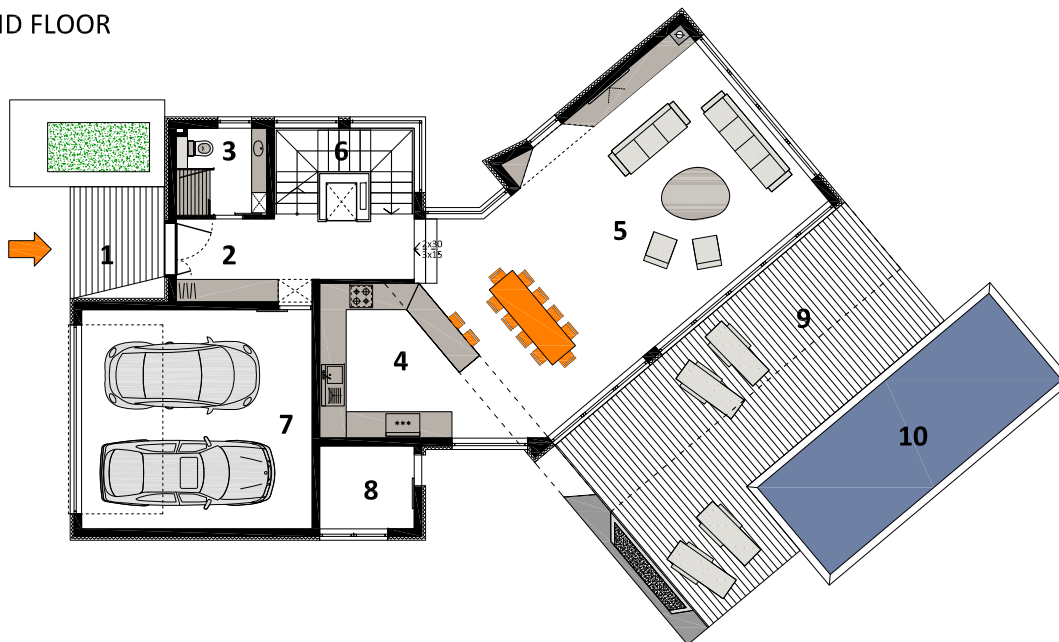


BASEMENT



BASEMENT	brutto (m ²)	koef.	NKP (m ²)
1 spa	70.70	1.00	70.70
2 sauna	5.20	1.00	5.20
3 laundry	5.50	1.00	5.50
4 toilet	3.30	1.00	3.30
5 tavern	40.10	1.00	40.10
6 winery	4.30	1.00	4.30
7 storage	8.90	1.00	8.90
8 bolier	5.70	1.00	5.70
9 pool technology	5.30	1.00	5.30
10 staircase (visina < 1m)	2.10	0.00	0.00
staircase (visina 1-2m)	2.60	0.75	1.95
11 elevator	1.90	1.00	1.90
BASEMENT TOTAL	155.60		152.85

GROUND FLOOR



GROUND FLOOR	brutto (m ²)	koef.	NKP (m ²)
1 porch	6.70	0.50	3.35
2 wardrobe/corridor	12.50	1.00	12.50
3 bathroom	5.40	1.00	5.40
4 kitchen	17.80	1.00	17.80
5 dining/living	58.40	1.00	58.40
6 staircase/elevator	8.70	1.00	8.70
7 garage	35.40	0.75	26.55
8 storage	5.50	0.75	4.13
9 covered terrace	23.00	0.50	11.50
uncovered terrace	25.00	0.25	6.25
10 pool	24.00	0.25	6.00
GROUND FLOOR TOTAL	222.40		160.58

