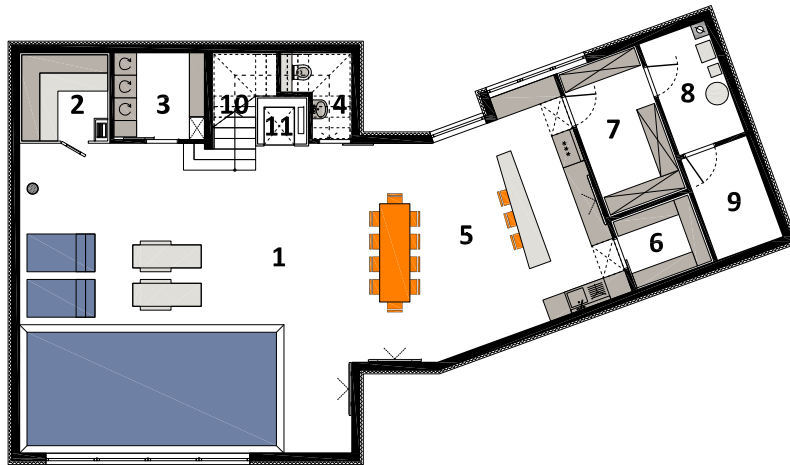
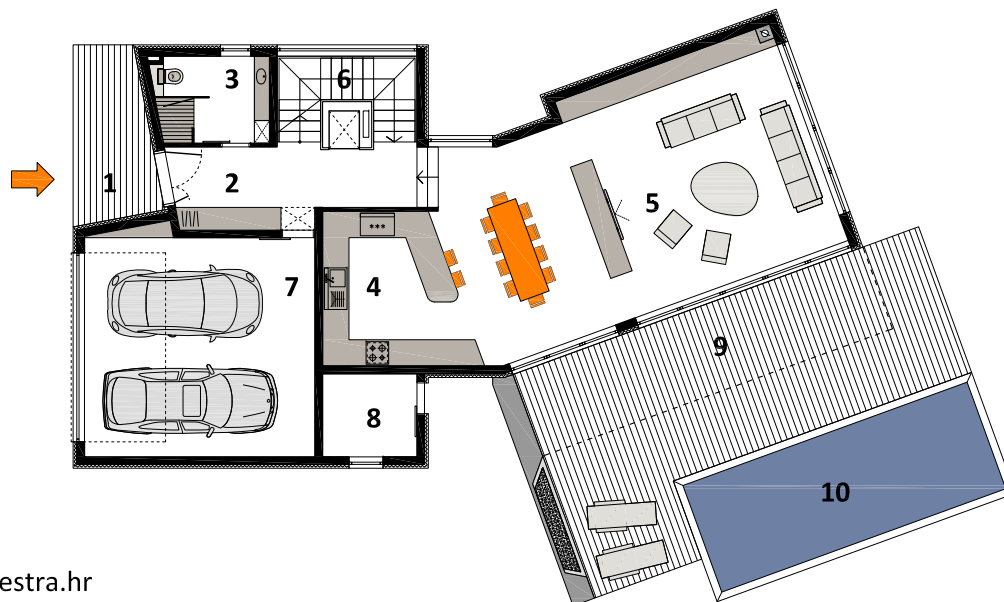


BASEMENT



BASEMENT	brutto (m ²)	koef.	NKP (m ²)
1 spa	70.70	1.00	70.70
2 sauna	5.20	1.00	5.20
3 laundry	5.50	1.00	5.50
4 toilet	3.30	1.00	3.30
5 tavern	38.90	1.00	38.90
6 winery	4.30	1.00	4.30
7 storage	8.90	1.00	8.90
8 bolier	5.80	1.00	5.80
9 pool technology	5.20	1.00	5.20
10 staircase (visina < 1m)	2.10	0.00	0.0
staircase (visina 1-2m)	2.60	0.75	1.95
11 elevator	1.90	1.00	1.90
BASEMENT TOTAL	154.40		151.65

GROUND FLOOR



GROUND FLOOR	brutto (m ²)	koef.	NKP (m ²)
1 porch	9.30	0.50	4.65
2 wardrobe/corridor	12.80	1.00	12.80
3 bathroom	6.80	1.00	6.80
4 kitchen	14.50	1.00	14.50
5 dining/living	61.40	1.00	61.40
6 staircase/elevator	8.70	1.00	8.70
7 garage	32.40	0.75	24.30
8 storage	5.50	0.75	4.13
9 covered terrace	22.70	0.50	11.35
uncovered terrace	30.80	0.25	7.70
10 pool	24.00	0.25	6.00
GROUND FLOOR TOTAL	228.90		162.33

